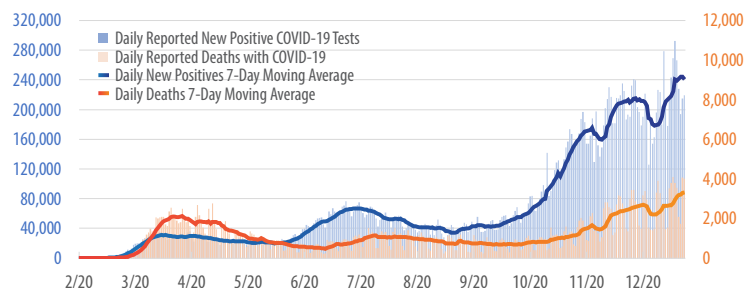


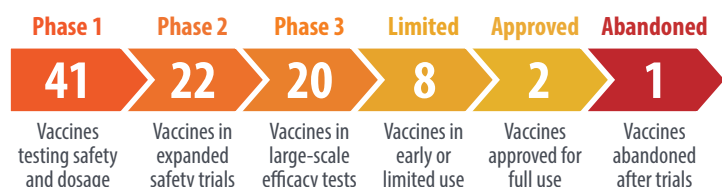
# First Trust COVID-19 TRACKER

## Daily Reported New Positive COVID-19 Tests vs. Daily Reported Deaths with COVID-19 in the U.S.

February 26, 2020 - January 13, 2021



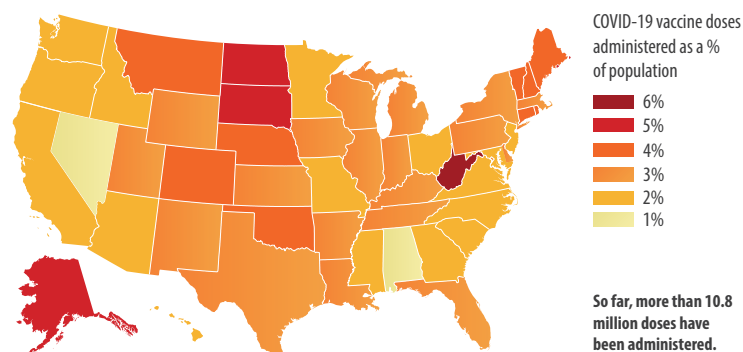
Source: Covidtracking.com



Source: The New York Times. Data as of January 14, 2021.

## COVID-19 Vaccines Across America

As of January 13, 2021



COVID-19 vaccine doses administered as a % of population

So far, more than 10.8 million doses have been administered.

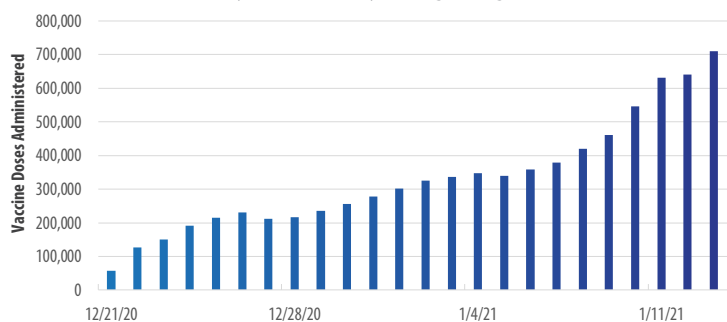
Sources: Bloomberg.com, census.gov (population estimates as of 7/1/20)



A study of 20,000 U.K. healthcare workers determined that **people who have previously contracted COVID-19 are just as immune to reinfection as those who have received a vaccine.**<sup>2</sup>

## Daily COVID-19 Vaccine Doses Administered in the U.S.

December 21, 2020 - January 13, 2021, 7-Day Moving Average



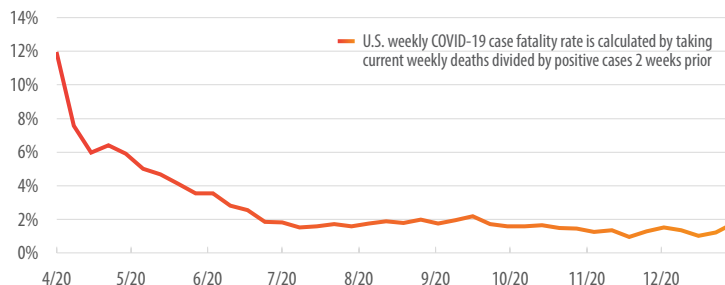
Source: ourworldindata.org

<sup>1</sup>cnbc.com; <sup>2</sup>ft.com (January 14, 2021)

As of September 16, 2020, data from Yelp's latest Local Economic Impact Report shows **60% of business closures due to the COVID-19 pandemic are now permanent.**<sup>1</sup>

## U.S. Weekly COVID-19 Case Fatality Rate

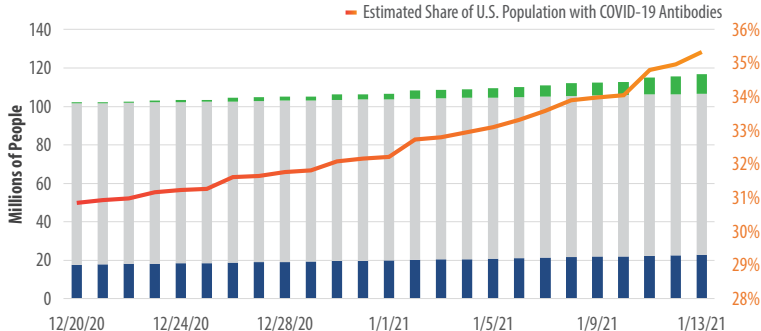
April 12, 2020 - January 10, 2021



Source: Covidtracking.com

## Path to Immunity

December 20, 2020 - January 13, 2021



Sources: CDC.gov, Covidtracking.com, U.S. Bureau of Economic Analysis (population estimates as of Nov 2020), First Trust Advisors L.P.

## Number of Hospitals Around or Above the U.S. Adult Inpatient Bed Occupancy 7-Day National Average

As of January 10, 2021

Adult Inpatient Bed Occupancy Rate (7-Day Average)	Number of Hospitals	% of Reporting Hospitals
70-79.99%	669	15.5%
80-89.99%	677	15.7%
90-99.99%	608	14.1%
100+ %	173	4.0%

Source: healthdata.gov. The current 7-day national average for U.S. adult inpatient bed occupancy is 75.3% and is calculated by dividing the total 7-day average of U.S. adult inpatient beds occupied among reporting hospitals by the total 7-day average of U.S. adult inpatient beds among reporting hospitals.