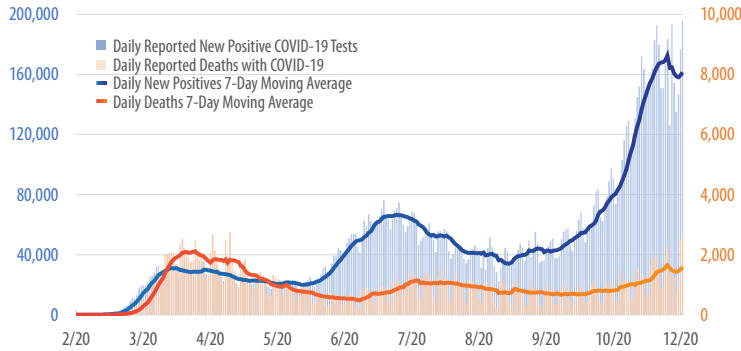


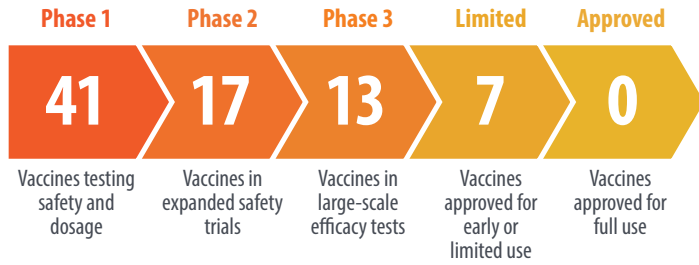
# First Trust COVID-19 TRACKER

## Daily Reported New Positive COVID-19 Tests vs. Daily Reported Deaths with COVID-19 in the U.S.

February 26, 2020 - December 2, 2020



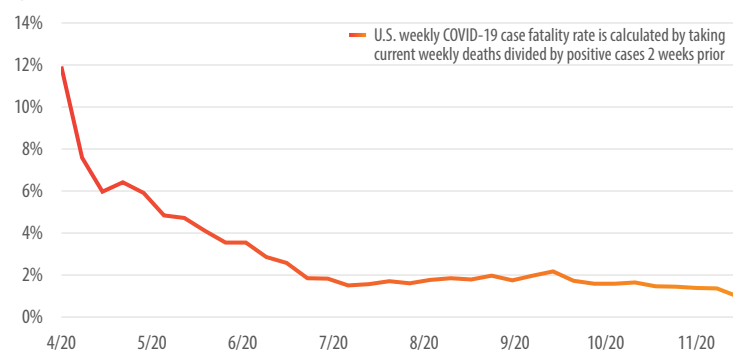
Source: Covidtracking.com



Source: The New York Times. Data as of December 2, 2020.

## U.S. Weekly COVID-19 Case Fatality Rate

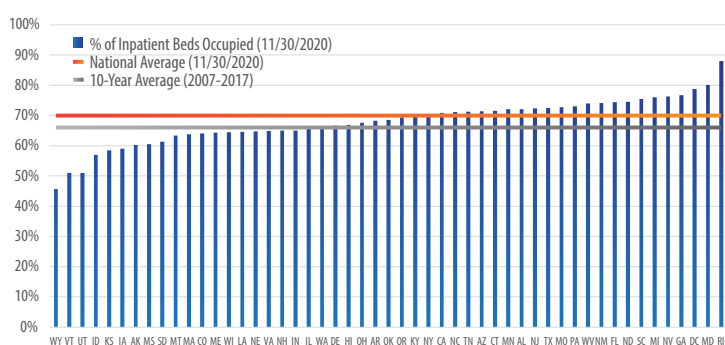
April 12, 2020 - November 29, 2020



Source: Covidtracking.com

## Percentage of Inpatient Hospital Beds Occupied

As of November 30, 2020



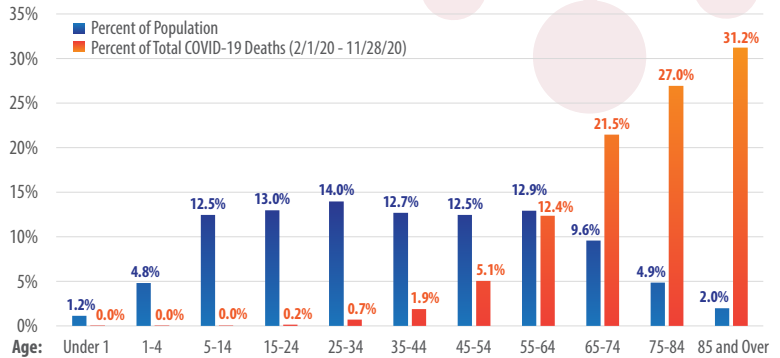
Sources: American Hospital Association, U.S. Department of Health & Human Services, HealthData.gov

A new NBER working paper analyzed the tone of COVID-19 related English-language news articles written since January 1, 2020. **91% of stories by U.S. major media outlets were negative in tone versus 54% for non-U.S. major sources and 65% for scientific journals.**

**The negativity of the U.S. major media was notable even in areas with positive scientific developments including school re-openings and vaccine trials.<sup>1</sup>**

## COVID-19 Deaths by Age vs. Share of Population in the U.S.

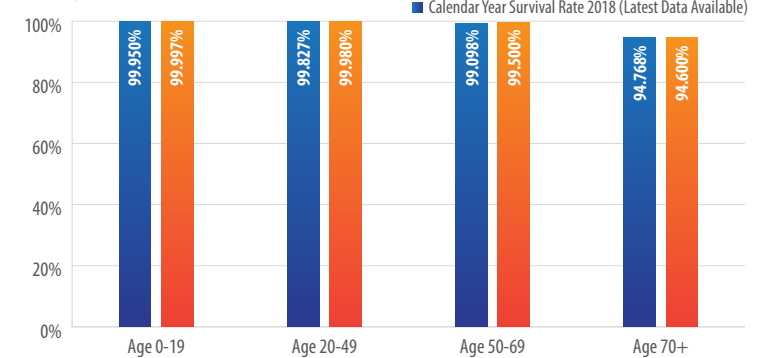
As of November 28, 2020



Sources: CDC.gov, National Center for Health Statistics

## COVID-19 Infection Survival Rates vs. Overall Survival Rates in 2018

As of September 10, 2020



Sources: First Trust Advisors, CDC.gov, Census.gov

It now appears **COVID-19 infected people in the U.S. in mid-December 2019, a few weeks before it was officially identified in China and about a month earlier than public health authorities found the first U.S. case**, according to a government study published Monday. **CDC scientists found antibodies in 39 samples from California, Oregon and Washington state collected between December 13 and December 16, 2019.** They also found 67 samples with antibodies in Massachusetts, Michigan, Wisconsin or Iowa, and Connecticut or Rhode Island collected between December 30, 2019 and January 17, 2020.<sup>2</sup>

## Estimates of Total COVID-19 Infections and Rates Per 100,000 Population in the U.S.

February 2020 - September 2020

Age Group	Estimated Total Infections	Rate, per 100,000*
<b>Overall**</b>	<b>52,885,526</b>	<b>16,165</b>
0-4	1,342,212	6,775
5-17	5,538,766	10,336
18-49	29,421,481	21,292
50-64	10,484,802	16,601
65 and over	5,636,607	10,750

Source: academic.oup.com (November 25, 2020), *Clinical Infectious Diseases*, ciaa1780

\*Population estimated using CDC Wonder Bridged-Race estimates

\*\*Due to rounding, age group and region estimates may not sum to overall estimates

<sup>1</sup>nber.org (November 2020); <sup>2</sup>wsj.com (December 1, 2020)